

PALFINGER

LIFETIME EXCELLENCE

P 480
JUMBO CLASS NX



TECHNICAL SPECIFICATIONS

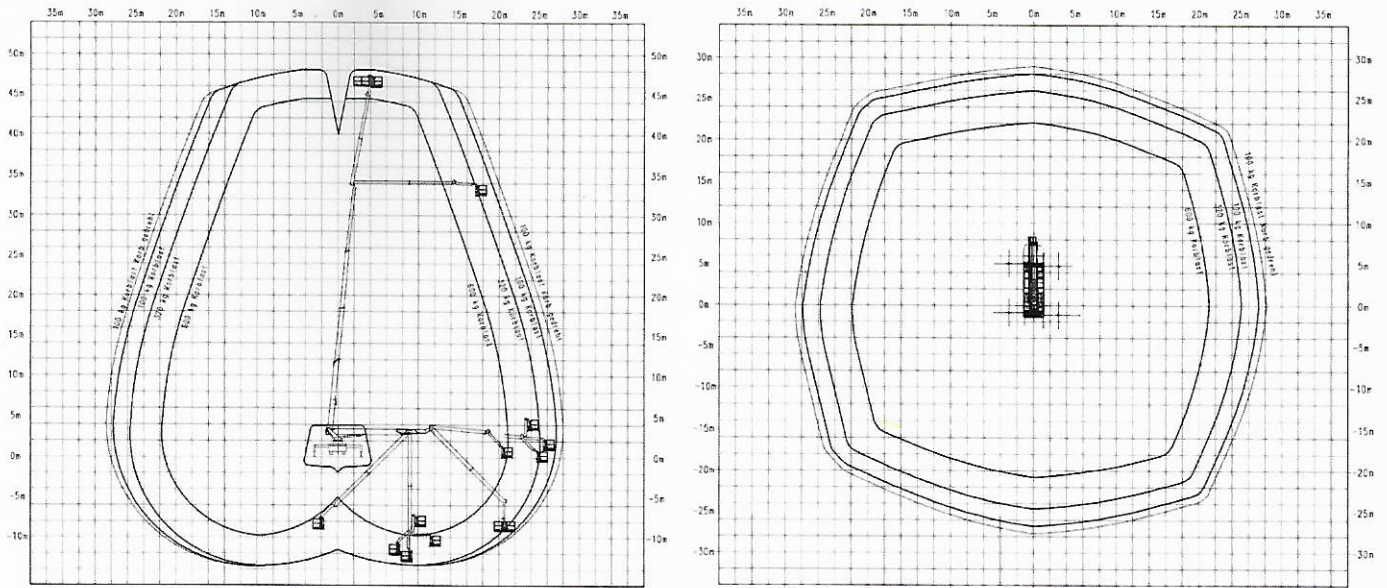
Max. working height	48 m
Max. cage bottom height	46 m
Max. outreach to the side*	28 m
Max. outreach*	31,5 m
Angle of main boom	540°
Rotation angle of cage	2 x 200°
Rotation angle of cage boom	240°
Max. cage load	600 kg
Size of cage	3,81 x 1,04 x 1,1 m
Permissible inclination of platform	2°
Height in transportposition*	3,96 m
Width in transportposition	2,53 m
Overall length	9,92 m
Wheelbase*	5,075 m
Total weight*	17800 kg

* Depends on truck chassis

STANDARD EQUIPMENT

Reversing camera
Home function
Automated positioning system
Telescopic cage
Driver information system
Safety plates
230 V CEE current supply with CEE socket in the workman cage
Assistance systems

WORKING DIAGRAMS



A possible 2% tolerance is contingent on structural components

DIMENSIONS

